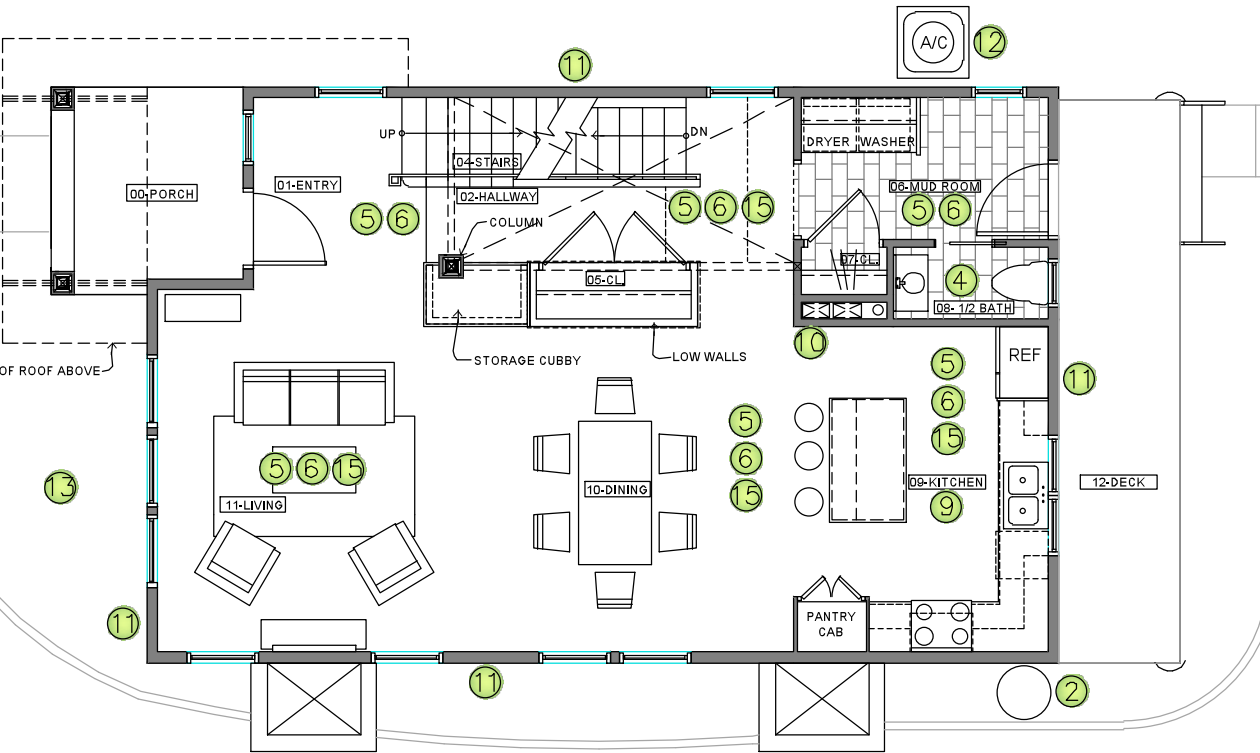
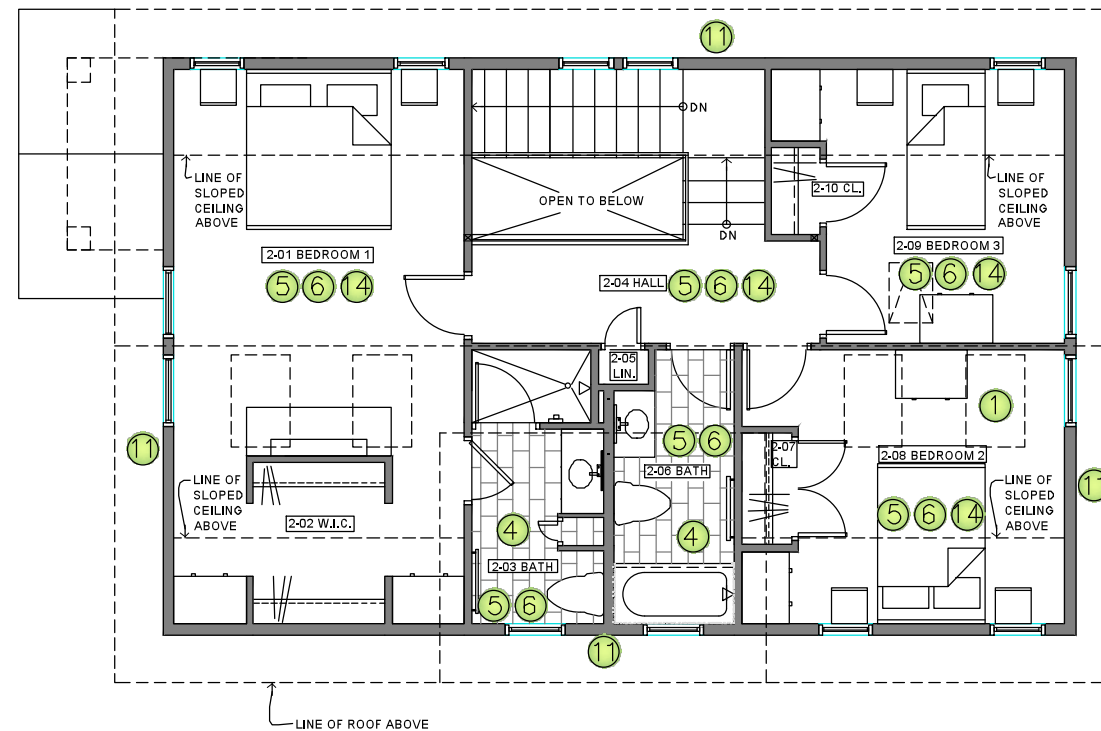
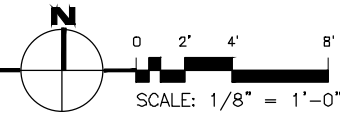


LEGEND

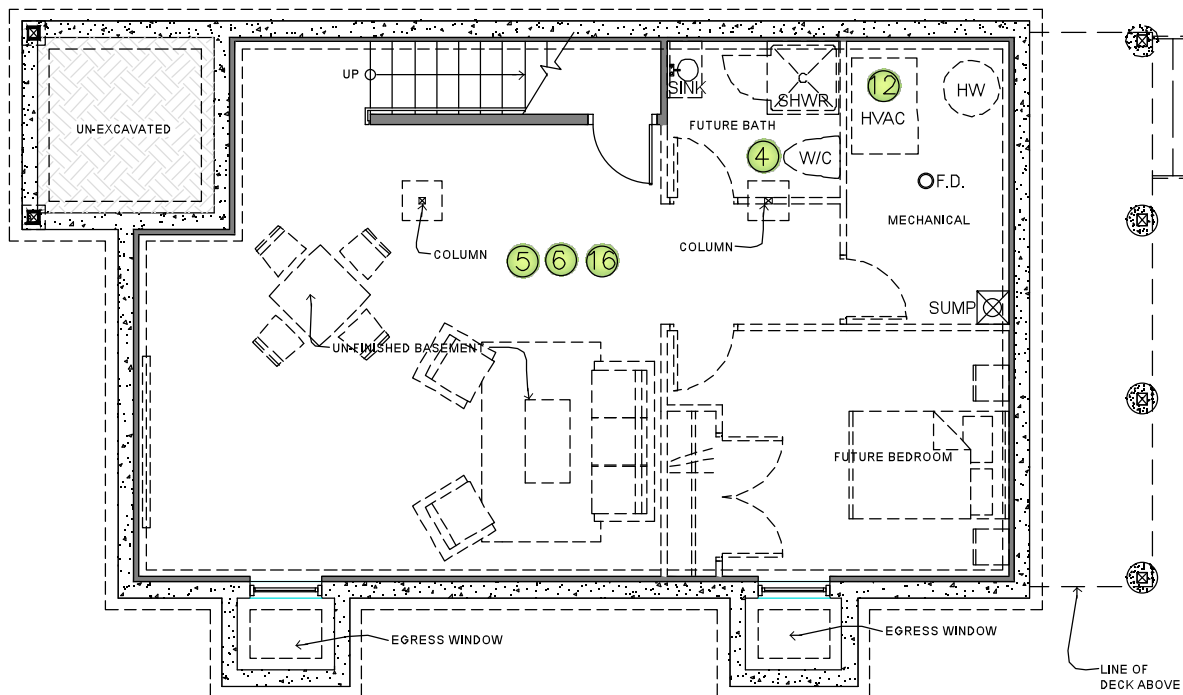
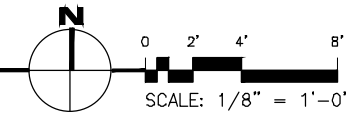
- ① Rough - in ready for roof mounted PV solar panels
- ② Rain barrel water collection
- ③ 50% of the site landscaping is planted with native or adaptive species
- ④ Low-flow bathroom fixtures and faucets
- ⑤ CFL lights
- ⑥ Low VOC primer, interior paint and sealants
- ⑦ Anderson Series 200 energy efficient windows
- ⑧ Fiber Cement Exterior siding and trim
- ⑨ Energy Star rated appliances
- ⑩ Programmable thermostats
- ⑪ Upgraded insulation R-values above code requirements
- ⑫ High efficiency 95% furnace and 13Seer HVAC system
- ⑬ Construction waste re-cycling
- ⑭ Green Label certified carpet
- ⑮ Water based hardwood floor finish
- ⑯ Passive radon features installed below the slab
- ⑰ Enterprise Green Community Certification (pending)



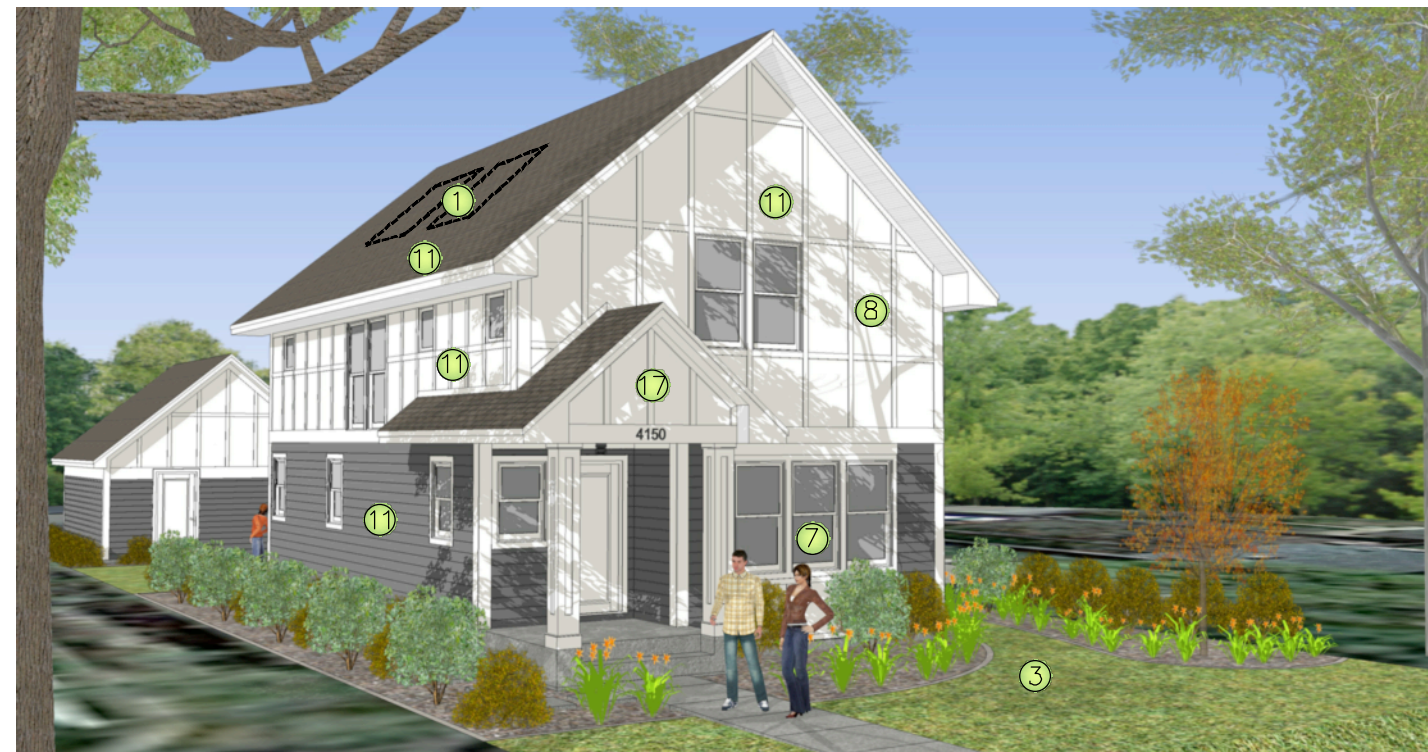
2 First Floor Plan
1/8"=1'-0"



3 Second Floor Plan
1/8"=1'-0"



1 Basement Floor Plan
1/8"=1'-0"



4 Perspective View
Not to Scale

Contact: Stephanie Gruver
(612) 581-5842

Building Supplies:
PRCBuild

Windows:
Andersen WINDOWS • DOORS

Contractor:
BENOZ HOMES INC.
Quality Built Homes
Lic. #BC300078
5000 16th Avenue S.E. #100
Burien, MN 55425
Phone: (612) 835-7827
www.benzohomes.com

Architects:
Isenberg+Associates
3505 West 28th Street
Minneapolis, Minnesota 55416
Phone: (612) 926-1981
© 2013 Isenberg + Associates

and
NVIZEON
ENVISION THE POSSIBILITIES
5128 WASHINGTON AVE. SOUTH
MINNEAPOLIS, MN 55410
(612) 920-3955 info@nvizion.com
© 2013 NVIZEON, Inc.

Developed by:
PEYSER LLC
building community one project at a time

Realtor:
RE/MAX Results